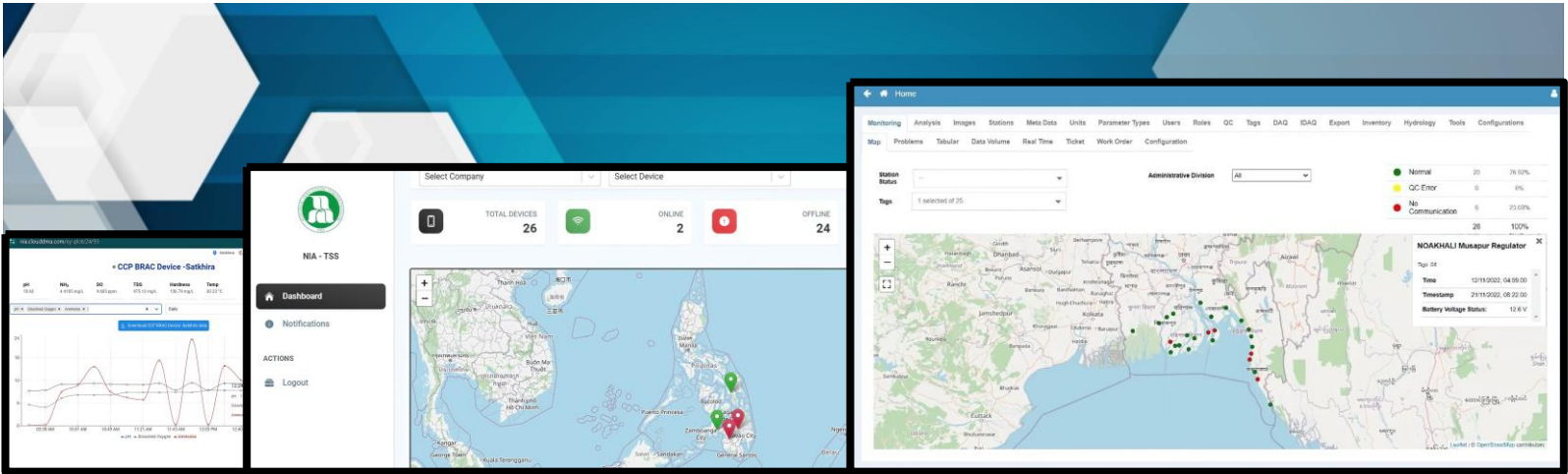




PRODUCT OVERVIEW

DMA TIME SERIES SOFTWARE



DMA TIME SERIES SOFTWARE (dTSS) FUNCTIONALITIES:

- **Data Acquisition Module**
- **Database MySQL**
- **Data Presentation Module**
- **Quality Control Module**
- **Asset Management Module**
- **Field Tracking Module**

Time Series Software (dTSS)

DMA TSS (dTSS) provides a platform designed to handle, analyze, visualize, and make predictions from time series data acquired in real-time from the field level instrumentations.

Time series data is a sequence of data points typically recorded at consistent time intervals (e.g., daily, weekly, monthly, or yearly observations). DMA software is equipped with algorithms and features that are specifically suited for time-dependent data, helping users identify patterns, trends, seasonality, and anomalies, as well as AI – Machine Learning based on historical data with the usage of transformer architecture and are pre-trained using a self-supervised objective to predict the next sequence, whereby specialized hardware/chemical sensors can be eliminated.



Additional functionalities of dTSS :

- Metadata
- Inventory
- User Admin & Management
- Data Visualization and Management
- Data Export and Reports



Enhanced Collaboration



Improved information sharing



Accelerated response

Benefits:



Water Quality Sensors Data



River Surface Water Level data



Rain Water – Tipping Buckets Data



Underground Water Level Sensors Data



Water Meter Sensors Data



Pressure Gauge Data



Climate Data

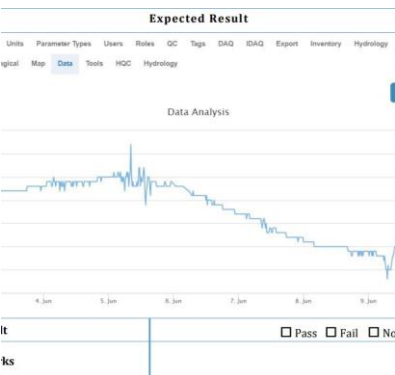
Take command with enhanced decision support and collaboration tools

From powerful analytics and data integration to customized dashboards and alerts, dTSS offers an unparalleled suite of tools designed to help you manage natural hazard risks with efficiency and confidence.



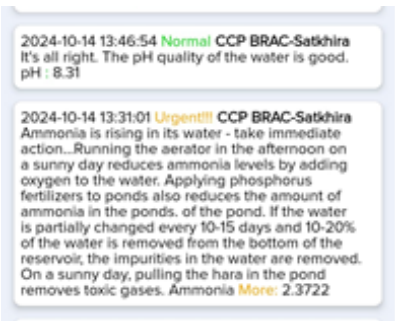
ACTIONABLE INSIGHTS

Easily integrates data interfaces from in-house environment, DMA's provides a platform whereby data source, and other environmental data sources can be integrated easily for remote monitoring



ACTIONABLE INSIGHTS

Actionable Insight of the data can be viewed as per visualization logic; monitoring for particular parameter(s)/sensor. But, if any is suspicious in data quality, note down the station and parameters.



AUTOMATED SURFACE WATER

DMA implements an automated alert engine, whereby real-time notifications can be sent to users based on alert limit set. For quality control these limits can be set for alerts notifications.



BETTER AWARENESS

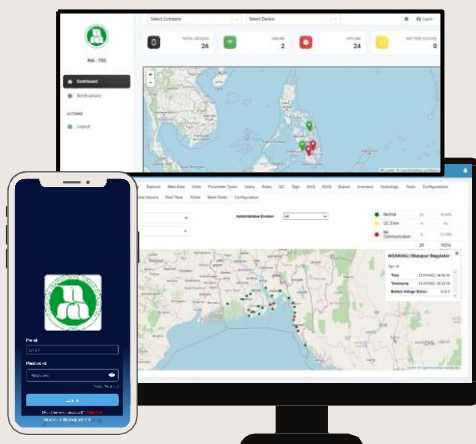
Graph (Click on Map (Home>Analysis>Graph) for inter comparison

COLLABORATION

Secure and scalable mobile phone application, which allows sharing information across users, enterprises, and world communities.

dTSS Difference:

- ♦ **Accurate Data:** Rigorous quality control with best practice security and governance across every aspect of data infrastructure, management, and access.
- ♦ **Actionable insights:** Advanced capabilities that deliver high-value analytics and insights you can act on, from pinpoint accurate forecasts to risk and impact assessments.
- ♦ **Reliable sensing:** Intelligent networks and field services, bolstered by robust sensing, data acquisition, telemetry, AI, and third-party sources.
- ♦ **Solution design:** Decades of experience tailoring natural hazard monitoring and early warning systems.



ASK ABOUT: Time Series Software (dTSS)

These sensors raw or measured data can be acquired and processed in any time interval. The dTSS is a combination of software modules provided to handle time series data and the visualization tools in web and mobile friendly applications.